

# CirPark

SOLUTIONS FOR  
**EFFICIENT PARKING**

Product Catalogue 2019

# ““ Solutions for Efficient Parking

---

## CirPark Platform 4

---

CirPark Software 6

---

CirCloud & CirMobile 8

---

## iPark 10

---

Guidance System 12

---

Counting System 22

---

Find Your Car 26

---

## LEDPark 30

---

## EVPark 36



# CirPark Platform

The CirPark Platform manages all CirPark solutions from one site.  
It is a powerful solution that integrates iPark, LEDPark and EVPark systems.  
A platform made of CirPark Scada software and third party integration.  
It is a multi-platform and mobile-oriented software infrastructure.  
Unique platform for the complete Efficient Parking.

## iPark

Intelligent Parking Guidance System including Single Space Detection and/or Area & Level Counting, and Car Finding Solutions for Indoor and Outdoor Parkings.



Guidance System



Counting System



Find Your Car

## LEDPark

Efficient Led Lighting System with Low Consumption including Lighting Regulation and Energy Monitoring System (EMS) for Parkings.



Led Park



Energy Efficiency

## EVPark

Electric Vehicle Charging System for Indoor and Outdoor Parkings.



Electric vehicle  
chargers



OCPP



DLM



# CirPark Platform

The CirPark Platform manages all CirPark Solutions from one site. It is a powerful solution that integrates iPark, LEDPark and EVPark systems. A Platform made of CirPark Scada software and third party integration. It is a multi-platform and mobile-oriented software infrastructure. Unique Platform for the complete Efficient Parking.

## LOCAL PLATFORM



CirPark Scada  
Software



XML API  
Application Protocol Interface  
open for integrators.

## CLOUD PLATFORM



CirCloud  
Server Platform



Cloud API  
API for integrators/operators



CirMobile  
Mobile Application for Android/iOS  
it consumes Cloud API

A hand is shown pointing at a tablet screen. The screen displays a grid of data, likely a parking management interface. A large blue triangular overlay covers the right side of the image, containing the title and description text.

# CirPark Software

CirPark Dynamic Software offers a real-time management of all Efficient Parking products which are iPark (counting, indoor/outdoor guidance and vehicle localization), LEDPark (regulated lighting control and energy efficiency) and EVPark (control of electric vehicle charging equipments).



## CirPark Scada Software

CirPark Scada Software allows real-time management of all Cirpark products:

**iPark:** counting, indoor/outdoor guidance and vehicle location.

**LEDPark:** regulated lighting control and energy efficiency.

**EVPark:** control of electric vehicle charging equipments.

It allows controlling the occupation, introducing a map of the installation, and creating visualization screens of the occupancy, crossing zones, statistics, reports and logic of operation and alarms.

### **Multiclient and cross-platform software.**

Connection via multiplatform web browser or through Windows O.S. program. Integration via XML API. Mail server and RSS. Monitoring of IP cameras. Integration and monitoring of third party system using API. License for unlimited number of parking spaces.

---

#### **CirPark Scada**

610105

#### **Car park management Scada Software**

Full Version

#### **CirPark Scada Software 1000 Bays**

610105-1K

#### **Car park management Scada Software**

Limited to 1000 parking spaces

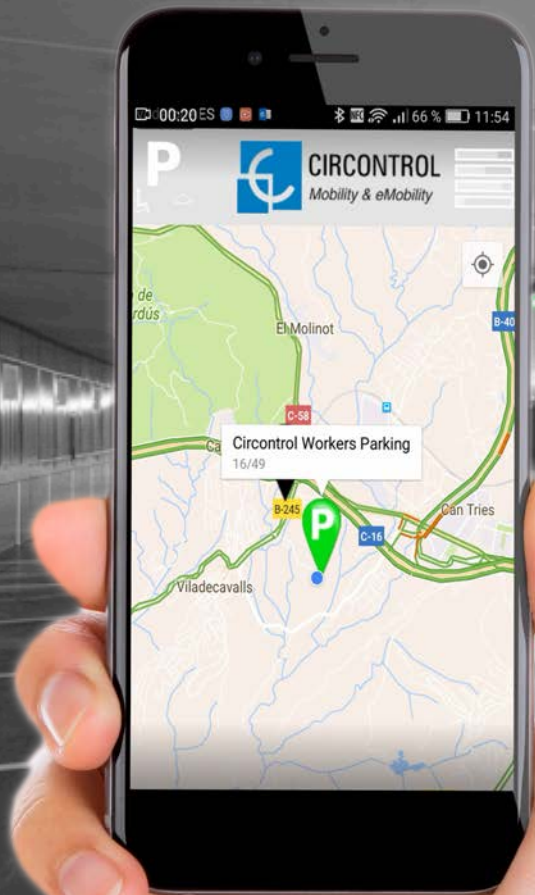
#### **CirPark Scada Software LT**

610111

#### **Car park management Scada Software**

Limited only to parking with no Single Bay Sensor Guidance. All family products included.

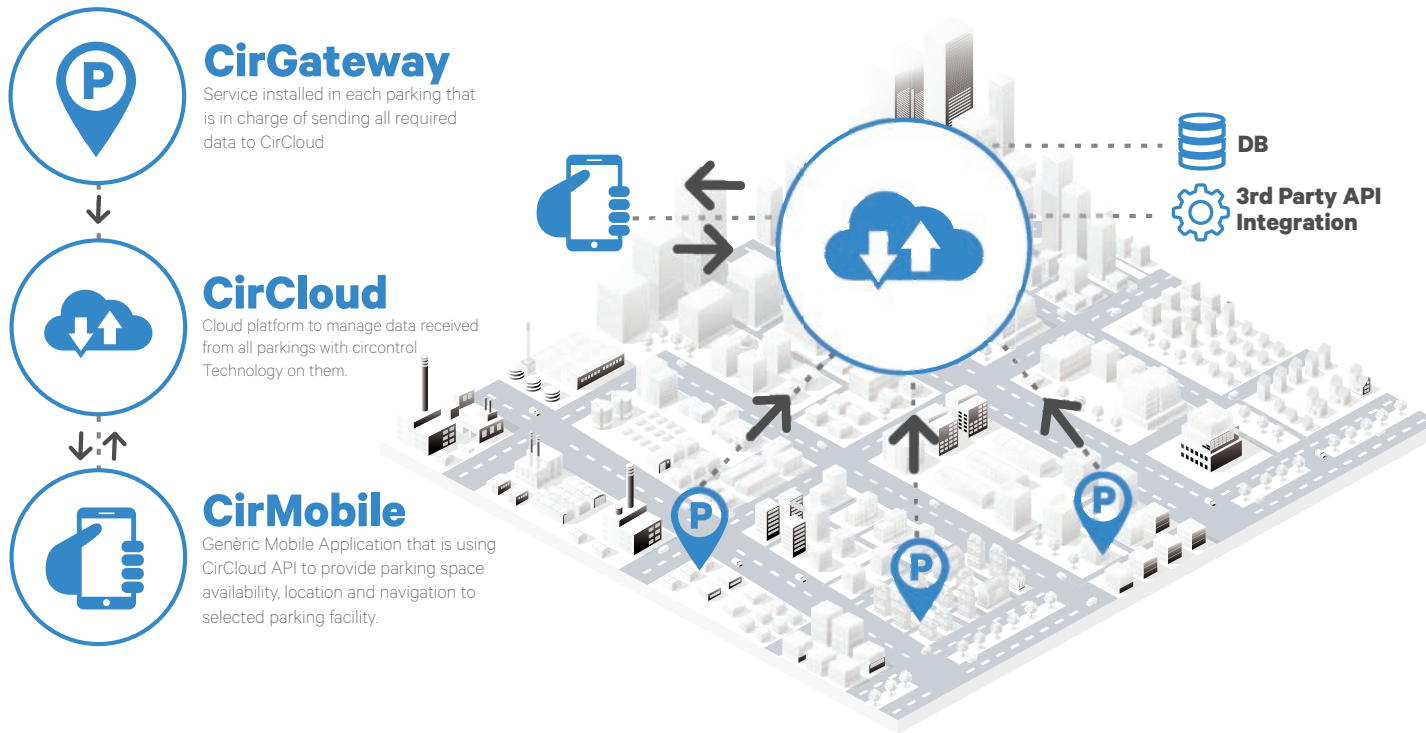




# CirCloud & CirMobile

Nowadays cloud technologies offer a wide range of opportunities to access and manage your data anywhere you are.





With **CirCloud Platform** you can access and manage data received from all car parks that use Circontrol technology.

You can also share this information and make it available worldwide downloading CirMobile app (available for Android and iOS). With this app your potential customers will be able to see available spaces whether they are regular ones, handicapped or EVCharge and be guided to them.



Download CirMobile now and increase your parking visibility worldwide!



# iPark

iPark is one of the most impressive and long-lasting systems on the market for Guidance, Find Your Car and Counting Systems. Integrated within the CirPark Platform, it becomes a powerful management tool that optimises the traffic in car parks and provides user satisfaction, giving them the information they need, when they need it. Operators, on the other hand, have an excellent tool to gain the loyalty of their customers, optimise traffic and occupancy, and reduce maintenance and operation.



## Guidance System

Indoor/Outdoor Dynamic Guidance system that manages the user information in order to optimise the occupancy and traffic of the parking facilities. Ultimate technology sensors and panels, plug&play and long-lasting. Worldwide product range oriented.



## Find Your Car

Powerful system able to provide car-finding solutions based on License Plate Recognition within lanes or in each parking space, offering users the location and route to their own car via the user application.



## Counting System

Level & Area counting system with full range of detectors and panel display information for Indoor & Outdoor parking facilities.

# Guidance system

Optimises traffic in car parks and provides user satisfaction by giving them the information they need

## Owner **Benefits**

- Customer Loyalty and Car Park reputation.
- Efficient Traffic and Occupancy management.
- Operational and Maintenance Reduction costs.
- Full remote control system with auto-pilot operability.
- Completely customizable Reports, RealTime Screens and HeatMaps.
- Manage Guidance, Illumination & EVChargers from one site.

## Customer **Benefits**

- Less time spent on locating free parking spaces.
- Less stress and increased ease of parking.
- Easy Location of Handicapped, EVCharge & Reserved places.

## Sensors

**Front-End Bay Sensor**  
INDOOR



**Inside Bay Sensor**  
INDOOR



## Displays

**VMS Range**  
INDOOR



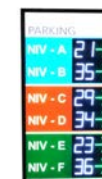
**RGB Range**  
INDOOR / OUTDOOR



**High Luminosity Range**  
OUTDOOR



**Panel Parking**  
INDOOR/OUTDOOR



# Control

## Converter

INDOOR/ OUTDOOR



## License

INDOOR/ OUTDOOR



## Controller

INDOOR/ OUTDOOR



## Server

INDOOR/ OUTDOOR



# Accessories

## Preconnectorized cable

INDOOR



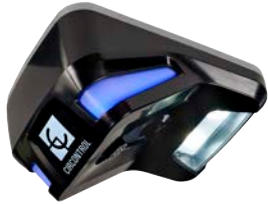
## Fixing Elements

INDOOR



## Front End Sensors

**TRILOGY**  
460315



**Ultrasonic Sensor RGB led indicator and led lighting system** for the detection and indication of the occupation status and for a courtesy lighting of the parking space. High brightness RGB led indicator Power: 24/48 Vdc. Consumption: 5 W. Communications: RS-485. It has connector for Power+Data. Extended Temperature Range -20 to 60°C. Remote Configurable Firmware. Sensing distance and brightness intensity adjustable by software. Recommended installation height between 2.10 and 3.5 meters. IP54 Protection.

**BILOGY**  
460313



**Ultrasonic Sensor and RGB led indicator** for the detection and indication of the occupancy status of the parking space. High brightness RGB led indicator Power: 24/48 Vdc. Consumption: 1.5 W. Communications: RS-485. It has connector for Power+data. Extended Temperature Range -20 to 60°C. Remote Configurable Firmware. Sensing distance and brightness intensity adjustable by software. Recommended installation height between 2.10 and 3.5 meters. IP54 Protection.

## Centre of Bay Sensor+Indicator

**SP3-RG**  
460128



**Ultrasonic sensor and Indicator light on the same equipment,** for the detection and indication of occupancy status of the parking space. Power+data Connector and external light connector. Power supply: 24 Vdc. Consumption: 1.2 W. Communications: RS-485. Extended Temperature Range -10 to 50°C. Remote Configurable Firmware. Recommended installation height between 2.30 and 3.5 meters. Detection distance adjustable by software. It has Red-Green led indicator.

**SP3-RB**  
460129



**Ultrasonic sensor and Indicator light on the same equipment,** for the detection and indication of occupancy status of the parking space. Power+data Connector and external light connector. Power supply: 24 Vdc. Consumption: 1.2 W. Communications: RS-485. Extended Temperature Range -10 to 50°C. Remote Configurable Firmware. Recommended installation height between 2.30 and 3.5 meters. Detection distance adjustable by software. It has Red-Blue led indicator (2000 mcd).

# Centre of Bay Sensor

## SP3

460127



**Ultrasonic sensor** for the detection of occupancy status of the parking space. Power+data Connector and external light connector. Power supply: 24 Vdc. Consumption: 0.8 W. Communications: RS-485. Extended Temperature Range -10 to 50°C. Remote Configurable Firmware. Recommended installation height between 2.30 and 3.5 meters. Detection distance adjustable by software.

# Indicators

## PP1-RG

460131



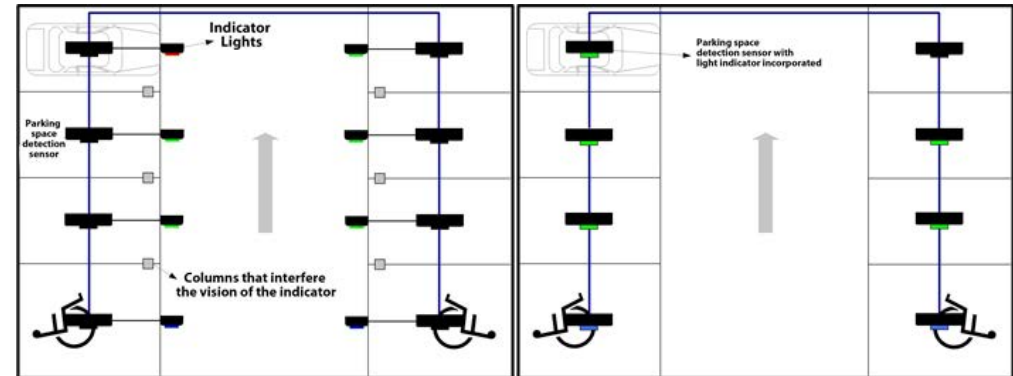
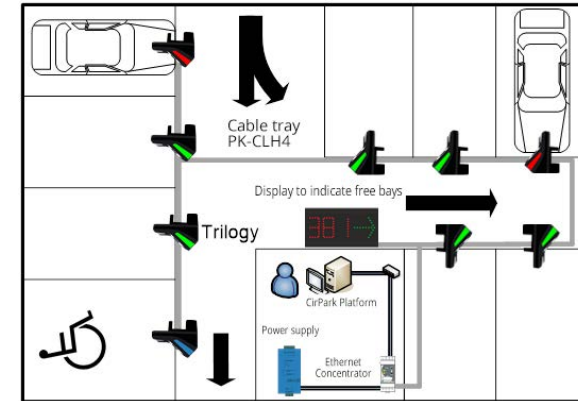
**Parking space occupancy status indicator**, with 360° vision, Red-Green color (2000 mcd). Power supply: 24 Vdc. Consumption: 0.7 W. Direct connection to the SP series detection sensor. Adjustable brightness intensity.

## PP1-RB

460132



**Parking space occupancy status indicator**, with 360° vision, Red-Blue color (2000 mcd). Power supply: 24 Vdc. Consumption: 0.7 W. Direct connection to the SP series detection sensor. Adjustable brightness intensity.



## VMS

**DX2-VMS-48**  
460329



**Indoor display to indicate free spaces and direction.** Matrix led Bicolor - Alphanumeric - 2 digits + Cross/Arrow. 10 arrow positions. Swap the position of the digits and arrow, functionalities like reverse digits, avoid zeros and show 'FULL'. Brightness intensity adjustable by software. Power supply: 24 Vdc. Consumption 4.3 W. Communication: RS-485. Height Digit 120 mm. Dimensions: 324 x 165,23 x 39 mm.

**DX-CA-48**  
460334



**Display Cross/Arrow, address indication of Free Places.** Arrow Color: Green-Red. 10 arrow positions. Brightness intensity adjustable by software. Power supply: 24 Vdc. Consumption: 2.5 W. Communications: RS-485. Height Arrow 120 mm. Dimensions: 164 x 165,23 x 39 mm.

**DX3-VMS-6**  
460330



**Indoor display to indicate free spaces and direction.** Matrix led Bicolor. Shows text up to 6 characters. Alphanumeric. 3 digits + Cross/Arrow. 10 arrow positions. Swap the position of the digits and arrow, functionalities like reverse digits, avoid zeros and show 'FULL'. Brightness intensity adjustable by software. Power supply: 24 Vdc. Consumption 5,8 W. Communication: RS-485. Height Digit 120 mm. Dimensions: 404 x 165,23 x 39 mm.

**DX-VMS-P-48**  
460332



**Indoor display in mode: [symbol 'P' + 3 digits].** Matrix led RGB. Symbol customizable by software. 6 character or scroll text up to 15 characters (P + 3 digits). Power supply: 24 Vdc. Consumption 14,4 W. Communication: RS-485. Brightness intensity adjustable by software. Height Digit 120 mm. Dimensions: 404 x 165,23 x 39 mm.

**DX4-VMS-8**  
460331



**Indoor display to indicate free spaces and direction.** Matrix led Bicolor. Shows text up to 8 characters. Alphanumeric. 4 digits + Cross/Arrow. 10 arrow positions. Swap the position of the digits and arrow, functionalities like reverse digits, avoid zeros and show 'FULL'. Brightness intensity adjustable by software. Power supply: 24 Vdc. Consumption 6,7 W. Communication: RS-485. Height Digit 120 mm. Dimensions: 564 x 165,23 x 39 mm.

**DX-VMS-F-48**  
460328



**Interior display in configuration [symbol 'P' + 3 digits + Cross / Arrow].** RGB led matrix. Customizable Symbol by software. Text of 6 characters or scroll up to 15. Power: 24 Vdc. Consumption 24 W. Communication: RS-485. Brightness intensity adjustable by software. Height Digit 120 mm. Dimensions: 564 x 165,23 x 39 mm.

**DX4-VMS-F-48**  
460333



**Interior display in configuration ['P' symbol + 4 digits + Cross / Arrow].** RGB led matrix. Customizable Symbol by software. Text of 6 characters or scroll up to 15. Power: 24 Vdc. Consumption 25.5 W. Communication: RS-485. Brightness intensity adjustable by software. Height Digit 120 mm. Dimensions: 644 x 165,23 x 39 mm.



# RGB

**DX2-RGB**  
460663



**Indoor display in mode: [2 digits + Cross/Arrow].** RGB LEDs with 120° angle. 8 predefined digit colors. Height digit 125 mm. Right/Left and Up/Down controllable arrow. Arrow: Green/Red and Cross: Red. Indication of free places and address. Display "FULL" or "000 Arrow/Cross". Power supply: 48-24 Vdc. Maximum consumption: 11 W. Communications: RS-485. Dimensions: 324 x 165,23 x 39 mm. Available on demand.

**DX3-RGB**  
460666



**Interior display in mode: [3 digits + Cross/Arrow].** RGB LEDs with 120° angle. 8 predefined digit colors. Height digit 125 mm. Right / Left and Up / Down controllable arrow. Arrow: Green/Red and Cross: Red. Indication of free places and address. Display "FULL" or "000 Arrow/Cross". Power supply: 48-24 Vdc. Maximum consumption: 18 W. Communications: RS-485. Dimensions: 404 x 165,23 x 39 mm. Stock on demand.

**DX4-RGB**  
460669



**Indoor display in mode: [4 digits + Cross/Arrow].** RGB LEDs with 120° angle. 8 predefined digit colors. Height digit 125 mm. Right/Left and Up/Down controllable arrow. Arrow: Green/Red and Cross: Red. Indication of free places and address. Display "FULL" or "000 Arrow/Cross". Power supply: 48-24 Vdc. Maximum consumption: 20 W. Communications: RS-485. Dimensions: 485 x 165,23 x 39 mm. Available on demand.

**DX2-RGB-P**  
460661



Customizable Backlighted



**DX2-RGB-EV DX2-RGB-M DX2-RGB-P-P**  
460661-EV 460661-M 460661-P-P

**Indoor display in mode: [Symbol + 2 digits + Cross/Arrow].** RGB LEDs with 120° angle. Customizable symbol with backlit vinyl. 8 predefined digit colors. Height digit 125 mm. Right/Left and Up/Down controllable arrow. Arrow: Green/Red and Cross: Red. Indication of free places and address. Display "FULL" or "000 Arrow/Cross". Power supply: 48-24 Vdc. Maximum consumption: 16 W. Communications: RS-485. Dimensions: 404 x 165,23 x 39 mm. Available on demand.

460664  
**DX3-RGB-P**



Customizable Backlighted



**DX3-RGB-EV DX3-RGB-M DX3-RGB-P-P**  
460664-EV 460664-M 460664-P-P

**Indoor display in mode: [Symbol + 3 digits + Cross/Arrow].** RGB LEDs with 120° angle. Customizable symbol with backlit vinyl. 8 predefined digit colors. Height digit 125 mm. Right/Left and Up/Down controllable arrow. Arrow: Green/Red and Cross: Red. Indication of free places and address. Display "FULL" or "000 Arrow/Cross". Power supply: 48-24 Vdc. Maximum consumption: 22,5 W. Communications: RS-485. Dimensions: 564 x 165,23 x 39 mm. Available on demand.

**DX4-RGB-P**  
460667



Customizable Backlighted



**DX4-RGB-EV DX4-RGB-M DX4-RGB-P-P**  
460667-EV 460667-M 460667-P-P

**Indoor display in mode: [Symbol + 4 digits + Cross/Arrow].** RGB LEDs with 120° angle. Customizable symbol with backlit vinyl. 8 predefined digit colors. Height digit 125 mm. Right/Left and Up/Down controllable arrow. Arrow: Green/Red and Cross: Red. Indication of free places and address. Display "FULL" or "000 Arrow/Cross". Power supply: 48-24 Vdc. Maximum consumption: 24 W. Communications: RS-485. Dimensions: 641 x 165,23 x 39 mm. Available on demand.

## RGB



**DX3-RGB-O**  
460666-O

**Outdoor display with [3 digits + Cross/Arrow].** RGB LEDs with 120° angle. 8 predefined digit colors. Height digit 125 mm. Right / Left and Up / Down controllable arrow. Arrow: Green/Red and Cross: Red. Indication of free places and address. Display "FULL" or "000 Arrow/Cross". Power supply: 48-24 Vdc. Maximum consumption: 18 W. Communications: RS-485. Dimensions: 404 x 165,23 x 39 mm. Stock available.

## High Luminosity



**OD.11**

**Outdoor display**, indicating the number of parking spaces available, high-luminosity red LED. Digit **height: 110 mm**. IP54. Luminosity control via software. Aluminium casing. Communication: RS485. Input power: 230 VAC.

**D2-OD.11** 460245

**Outdoor display 2 digits.** 335mm x 209mm x 70mm. 10W.

**D3-OD.11** 460145

**Outdoor display 3 digits.** 335mm x 209mm x 70mm. 15W.

**D4-OD.11** 460246

**Outdoor display 4 digits.** 407mm x 209mm x 70mm. 20W.



**OD.20**

**Outdoor display**, indicating the number of parking spaces available, high luminosity red LED. Digit **height: 200 mm**. Luminosity control via software. Aluminium casing. Communication: RS485. Input power: 230 VAC.

**D2-OD.20** 460247

**Outdoor display 2 digits.** 514mm x 290mm x 70mm. 25W.

**D3-OD.20** 460232

**Outdoor display 3 digits.** 514mm x 290mm x 70mm. 35W.

**D4-OD.20** 460248

**Outdoor display 4 digits.** 584mm x 290mm x 70mm. 45W.



**OD.30**

**Outdoor display**, indicating the number of parking spaces available, high luminosity red LED. Digit **height: 300 mm**. Luminosity control via software. Aluminium casing. Communication: RS485. Input power: 230 VAC.

**D2-OD.30** 460242

**Outdoor display 2 digits.** 676mm x 381mm x 70mm. 25W.

**D3-OD.30** 460243

**Outdoor display 3 digits.** 676mm x 381mm. 37W.

**D4-OD.30** 460244

**Outdoor display 4 digits.** 676mm x 381mm x 70mm. 48W.

# Panel Parking

## Display OPEN / CLOSED

460808-EN/ESP/FR/CA



**Display LEDs 590x140x40 mm** Text available in 4 languages: English (OPEN/ CLOSED), French (LIBRE/ COMPLET), Spanish (ABIERTO/ CERRADO), Catalan (OBERT/ TANCAT). LED 5mm. Colours: green/red. Digit height: 82mm. Input power: 230 V 50Hz.

Dimensions: 750 x 250 x 100mm

**English** 460808-EN

**Spanish** 460808-ES

**French** 460808-FR

**Catalan** 460808-CA

## Panel Parking 'P' with OPEN/CLOSED display



### Panel Parking 'P' with OPEN/CLOSED display.

Structured made off 2 mm aluminium plate. Folded and welded, painted in textured black epoxy. Backlight by LED. Dimensions: 1200mm x 940mm x 130mm. Available in 4 languages: English (OPEN/ CLOSED), French (LIBRE/ COMPLET), Spanish (ABIERTO/ CERRADO), Catalan (OBERT/ TANCAT). 6mm front antivandal polycarbonate with translucent vinyl labelling. Window with display visualization and solar protection film.

**English** 460807-EN

**Spanish** 460807-ES

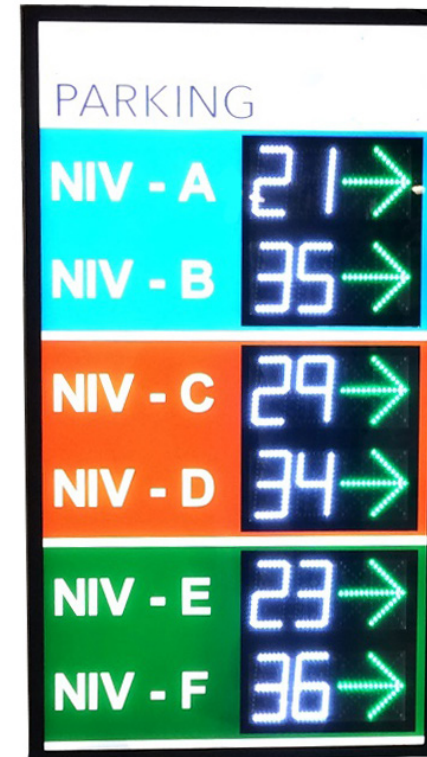
**French** 460807-FR

**Catalan** 460807-CA

## Panel Parking 460187

### Panel with information about the capacity of the car park, per floor or overall. 2-3-4 digit displays.

Panel with information about the capacity of the car park, per floor or overall. 2-3-4 digit displays. Advanced, Basic and Outdoor Displays. Communication: RS-485. Digit colour: RGB or Red. Brightness intensity adjustable by software.



## Gateways & Controllers

**TCP3RS**  
460803

**Industrial RS-485 to TCP-IP Ethernet communication converter.** RS-232/RS-485 opto-isolated port. Input power: 230 V AC. Consumption: 2 VA. DIN rail.



## Software Licenses

**CirPark Scada**  
610105

**Car park management Scada software.**  
Full version.

**CirPark Scada Software 1000 Bays**  
610105-1K

**Car park management Scada software.**  
Limited to 1000 parking spaces.

**CirPark Scada Software LT**  
610111

**Car park management Scada software.**  
Limited to parkings with no Single Bay Sensor Guidance.



## Servers

**Computer Equipment for CirPark systems.** Standard PC. Pentium i3 or higher. 4GB of RAM memory (depends on the parking spaces). 500GB of HD. O.S. windows 7/10/server. Customized work desktop, users, protections and language.



**PK-CPU-ES Spanish version**  
460310

**PK-CPU-EN English version**  
460311

**CONEC-PARK**  
460199

**CarPark concentrator to manage autonomously iPark systems** with a 500 bay capacity parking, ledPark lighting and energy efficiency systems and evPark charge stations for electrical vehicles. It includes an embedded CirPark Scada Engine. Power with 230Vca.



**ECCUPARK**  
460809

**Parking Concentrator, with Management and Information storage capacity.** Control of equipment through bus 485 for iPark counting systems, LedPark lighting and energy efficiency systems as well as EVPark charging stations. Perfect device for automation purposes. Incorporates a CirPark Scada embedded limited distribution. It has 8 digital inputs and 6 relay outputs. 10BaseT / 100Base TX Ethernet Port. 230 Vac power supply. Informative Display with touch buttons. 3G connection with SIM (not included).



# Accessories

**PK-TFT**  
460204



**TFT 22"** Wide Screen with high resolution

**PK-SWITCH 8P**  
460205G

**Gigabit Switch 8 ports** 10/100/1000 Mbps

**PK-SWITCH 16P**  
460206G

**Gigabit Switch 16 ports** 10/100/1000 Mbps



**PSC-240-24**  
200520

**Switched power supply.** Input power: 230 V AC. Output voltage: 24 V DC. Power: 240 W. DIN rail.



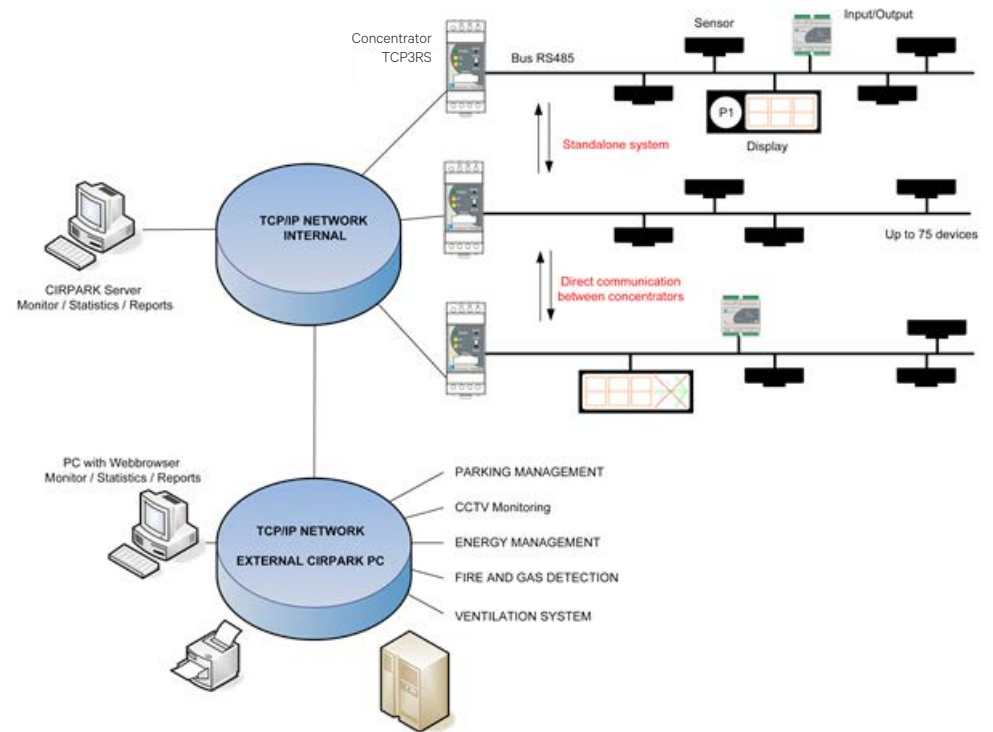
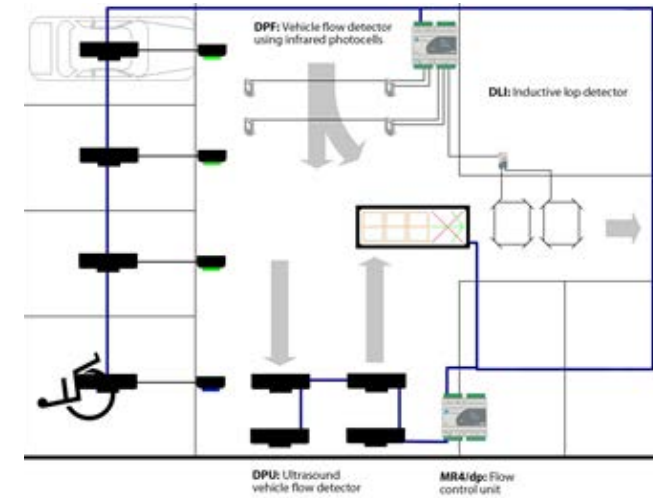
**PSC-240-48**  
200526

**Switched power supply.** Input power: 230 V AC. Output voltage: 48 V DC. Power: 240 W. DIN rail.



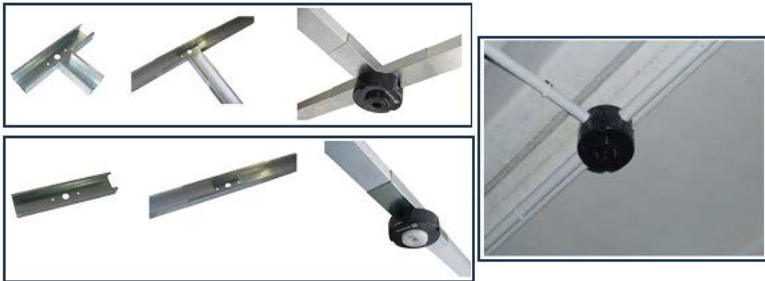
**PSC-480-48**  
460224

**Switched power supply.** Input power: 230 V AC. Output voltage: 48 V DC. Power: 480 W. DIN rail.



## Guidance Accesories

**PK-CLIP-1K**  
460161 **Sturdy clip for securing the SP series sensors and indicator lights.** For clamping in metal tray or pk-socket accessory. 1000 pcs bag



## Fixings

**PK-SOCKET BI  
BILOGY/TRILOGY**  
460287



**Polycarbonate socket for Bilogy and Trilogy pipe installations.** 25-mm tube for connecting sensors.

**PK-SOCKET**  
460159



**Polycarbonate socket for SP3 and DPU pipe installations,** 25-mm tube for connecting sensors and 20-mm tube for connecting the light indicator sensor

**PK-TPPx**  
460173



**Black plastic accessory for mounting** the space indicator PPx.

**PK-CP245**  
460170



**Blind aluminium tray,** 48 mm wide and 2.45 m long.

**PK-CP80T**  
460686



**Galvanised-steel accessory to cover the tray.** External clip subjection. Openings to introduce the equipment cables inside the tray. 80cm long.

**PK-CP050**  
460171



**Blind aluminium tray,** 48 mm wide and 0.5 m long.

## Wiring

**PK-CP50T**  
460691



**Galvanised-steel tray cover.** External clip subjection. Openings to introduce the equipment cables inside the tray. 50cm long. Used for the Front End sensors bilogy or trilogy.

**PK-PUC**  
460176



**Galvanised-steel accessory for attaching the channel** to the ceiling.

**PK-G**  
460687



**Galvanised-steel accessory in a G shape for attaching the channel** to the ceiling. Holds the tray for the outside making the installation faster an easier.

**PK-E**  
460175



**Galvanised-steel accessory** for joining trays.

**PK-C**  
460174



**Galvanised-steel accessory** at a 90° angle.

**PK-TSS**  
460172



**T-shaped galvanised-steel accessory** to install the SP sensor series.

**PK-ESS**  
460179



**Galvanised-steel accessory** to install the SP sensor series. Used at the end of a tray line.

**C-LHS4**  
460115



**3-m halogen-free hose-cable**, to connect sensors of SP series, Bilogy or Trilogy. 2 x 1.5 mm<sup>2</sup> power cable + 2 x 0.34 mm<sup>2</sup> twisted and shielded cable for the RS-485 bus.  
\*Other lenghts available under request

**C-SS4-T**  
460152



**3-m halogen-free hose-cable**, to connect sensors of SP series, Bilogy or Trilogy. 2 x 1.5 mm<sup>2</sup> power cable + 2 x 0.34 mm<sup>2</sup> twisted and shielded cable for the RS-485 bus. Specially designed for installation inside a tube.  
\*Other lenghts available under request

**C-LHP3**  
460116



**3-m halogen-free hose-cable**, for the connection between SP sensor series and its own indicator. 3 x 0.75 mm<sup>2</sup>.  
\*Other lenghts available under request

**C-LH4**  
460117



**100-m halogen-free hose-cable** extending the row of devices. 2 x 1.5 mm<sup>2</sup> power cable + 2 x 0.34 mm<sup>2</sup> twisted and shielded cable for the RS-485 bus.

**C-DD40-P**  
460293



**40cm halogen-free hose-cable, to connect displays internally** inside Panel parking. 2 x 1.5 mm<sup>2</sup> power cable + 2 x 0.34 mm<sup>2</sup> twisted and shielded cable for the RS-485 bus.

**Cable Cat.5 (305mts)**  
230003



**305-m UTP communication cable**, category 5. Unshielded cable, four twisted pairs WG26.



# Counting system

Level & Area counting system with full range of detectors and information panels for Indoor & Outdoor parking facilities.

This system offers 3 different types of detection to control the access into different areas with reduced equipment and high levels of accuracy.

It includes Autonomous Control Units to automatize the counting and control of any area. This is possible with embedded CirPark Scada that makes this system smart.

## Detectors

### Inductive Loop Detectors

INDOOR/OUTDOOR



### Fotocell crossing-zone Detectors

INDOOR/OUTDOOR



### Ultrasonic crossing-zone Detectors

INDOOR/OUTDOOR



## Displays

### VMS Range

INDOOR



### RGB Range

INDOOR / OUTDOOR



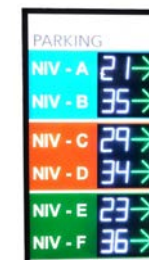
### High Luminosity Range

OUTDOOR



### Panel Parking

OUTDOOR





# Control

**Control Unit for crossing-zone detectors**  
INDOOR/ OUTDOOR



**Controller**  
INDOOR/ OUTDOOR



**Converter**  
INDOOR/ OUTDOOR



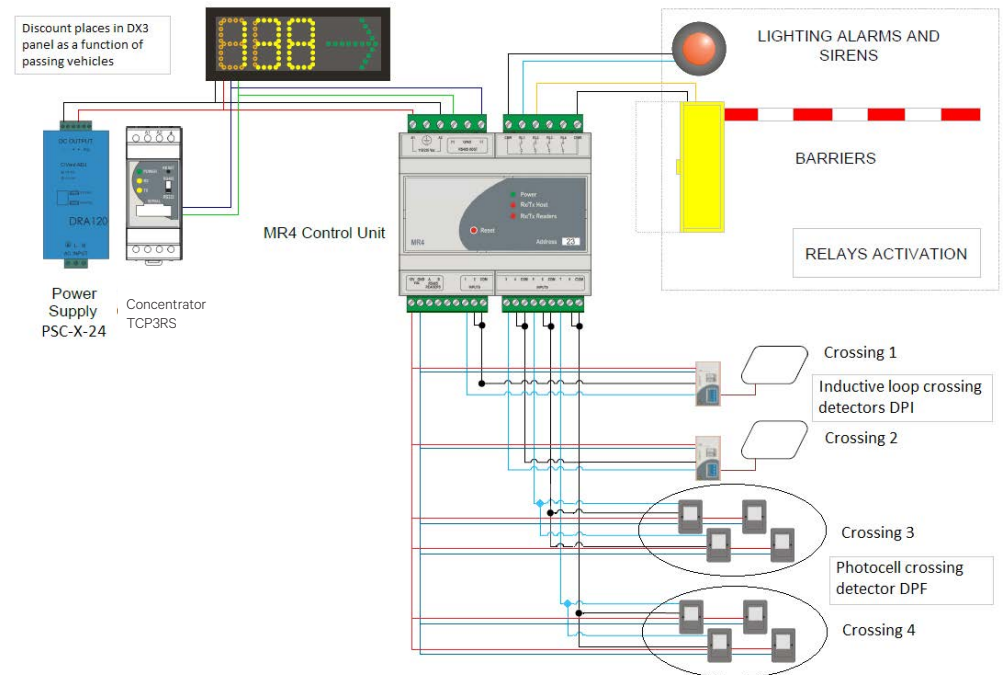
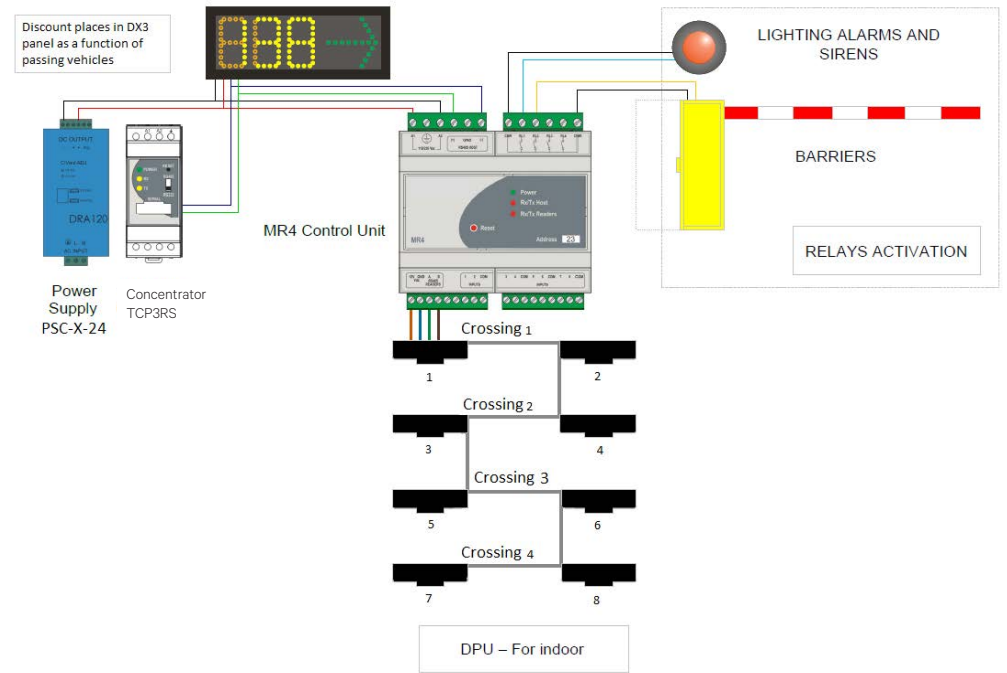
**Server**  
INDOOR/ OUTDOOR



**Ecupark**  
INDOOR/ OUTDOOR



**License**  
INDOOR/ OUTDOOR





## Detectors

### MR4/dp-48

460804



**Vehicle counting equipment.** Control unit for inductive loop, photocell or DPU pass detectors. Power supply: 24/48 Vdc. Consumption: 1 W + (Number of zones x 1,6 W). Communications via RS-485. 8 digital inputs for control of up to 4 pass-zones. Additional RS-485 input for control of up to 4 DPU. Incorporates 4 relay outputs for automation, depending on the occupation. Storage memory for the 4 pass-zone counters. Auxiliar outout: 24 Vdc

### DPF

460114



**Vehicle flow detector using infrared photocells.** Set of two modules with two photocells each (transmitter-receiver). Input power: 24 V DC. Activation by digital input in MR4/dp. Powered directly from MR4/dp-48.

### DPU

460133



**Ultrasound vehicle flow detector.** Set of two ultrasound sensors. 24 V DC input power. Consumption: 2 x 0.8 W. Communication: RS-485 with MR4/dp. Socket for installation in tube included. Powered directly from MR4/dp-48.

### LC-720

460503



**Infrared detector,** 90° wall, 1000 W load, 12 m, for pedestrian detection and intelligent management of lighting systems. Input power: 220 V AC

### DLI

140022



**Inductive loop detector.** Input power: 230 Vac. Consumption: 1.5 VA. Control with one inductive loop. Activates a relay when a detecting a metal mass on the loop. Possibility of adjusting the sensitivity. Adjustable pulse type, during or after detection.

### DLI-24

460219



**Inductive loop detector.** Input power: 24 V DC. Consumption: 1.5 VA. Control with one inductive loop. Activates a relay when a detecting a metal mass on the loop. Possibility of adjusting the sensitivity. Adjustable pulse type, during or after detection. Powered directly from MR4/dp-48.

### DLI-PARK

460180



**Inductive loop detector.** Input power: 230 Vac. Consumption: 1.5 VA. Control of two inductive loops. Activates a relay when detecting a metal mass on the loop. Possibility of adjusting the sensitivity. Adjustable pulse type, during or after detection.

### DLI-PARK-24

460220



**Inductive loop detector.** Input power: 24 V DC. Consumption: 1.5 VA. Control of two inductive loops. Activates a relay when detecting a metal mass on the loop. Possibility of adjusting the sensitivity. Adjustable pulse type, during or after detection. Powered directly from MR4/dp-48.

# Panel Parking

## Panel Parking

460187



**Panel with information** about the capacity of the car park, per floor or overall. 2-3-4 digit displays. Consumption: 2.5 - 4 W per panel. Communication: RS-485. Digit colour: amber - red. Brightness intensity adjustable by software.

- 24/48 Vdc if TCP3RS is located outside
- 220 Vac if TCP3RS is located inside

# Control & Software

## TCP3RS

460803



**Industrial RS-485 to TCP-IP Ethernet communication converter.** RS-232/RS-485 opto-isolated port. Input power: 230 V AC. Consumption: 2 VA. DIN rail.

## ECCUPARK

460809



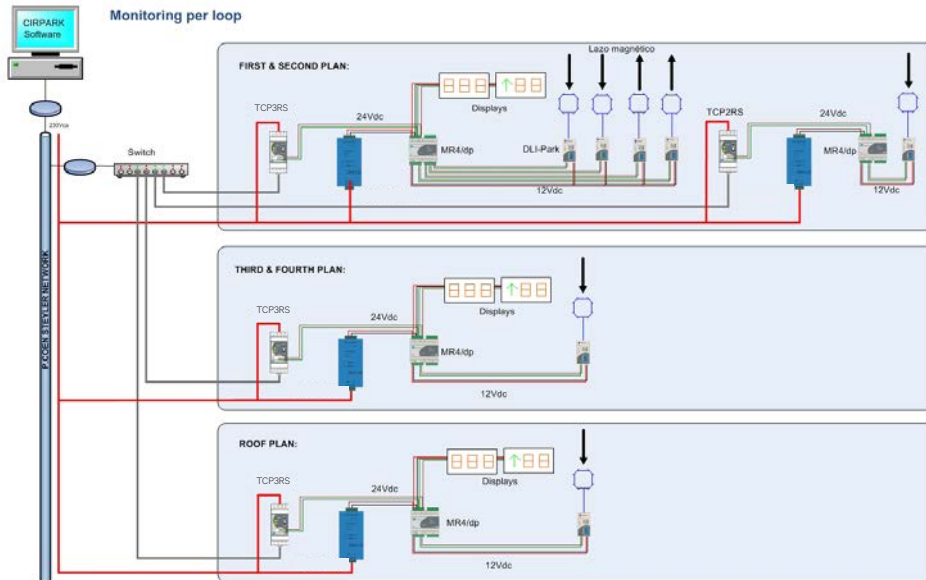
**Embedded CirPark Control Unit** working as a Parking Concentrator, with Management and Information storage capacity. Control of equipment through bus 485 for iPark counting systems, LedPark lighting and energy efficiency systems as well as EVPark charging stations. Perfect device for automation purposes. Incorporates a CirPark Scada embedded limited distribution. It has 8 digital inputs and 6 relay outputs. 10BaseT / 100Base TX Ethernet Port. 230 Vac power supply. Informative Display with touch buttons. 3G connection with SIM (not included)

## CONEC-PARK

460199



**CarPark concentrator** to manage autonomously iPark systems with a 500 bay capacity parking, ledPark lighting and energy efficiency systems and evPark charge stations for electrical vehicles. It includes an embedded CirPark Scada Engine. Power with 230Vca.





# Find Your Car

Powerful system able to provide car-finding solutions based on QR Code or License Plate Recognition within lanes or in each parking space, offering users the location and route to their own car via the user application.

## Features

**License Plate Recognition** by lane or within defined zones in small parkings to facilitate user's car location.

**Car Recognition** within each special parking space, such as EV charging spaces or reserved VIP bays.

**Combining Find Your Car with CirPark Guidance System** provides a car location service with great reliability.

## Cameras

**Three Bay camera**  
INDOOR



**Lane Cameras**  
INDOOR/OUTDOOR



## Terminal

**Kiosk User Interface**  
INDOOR



# Control

**Switch POE**  
INDOOR



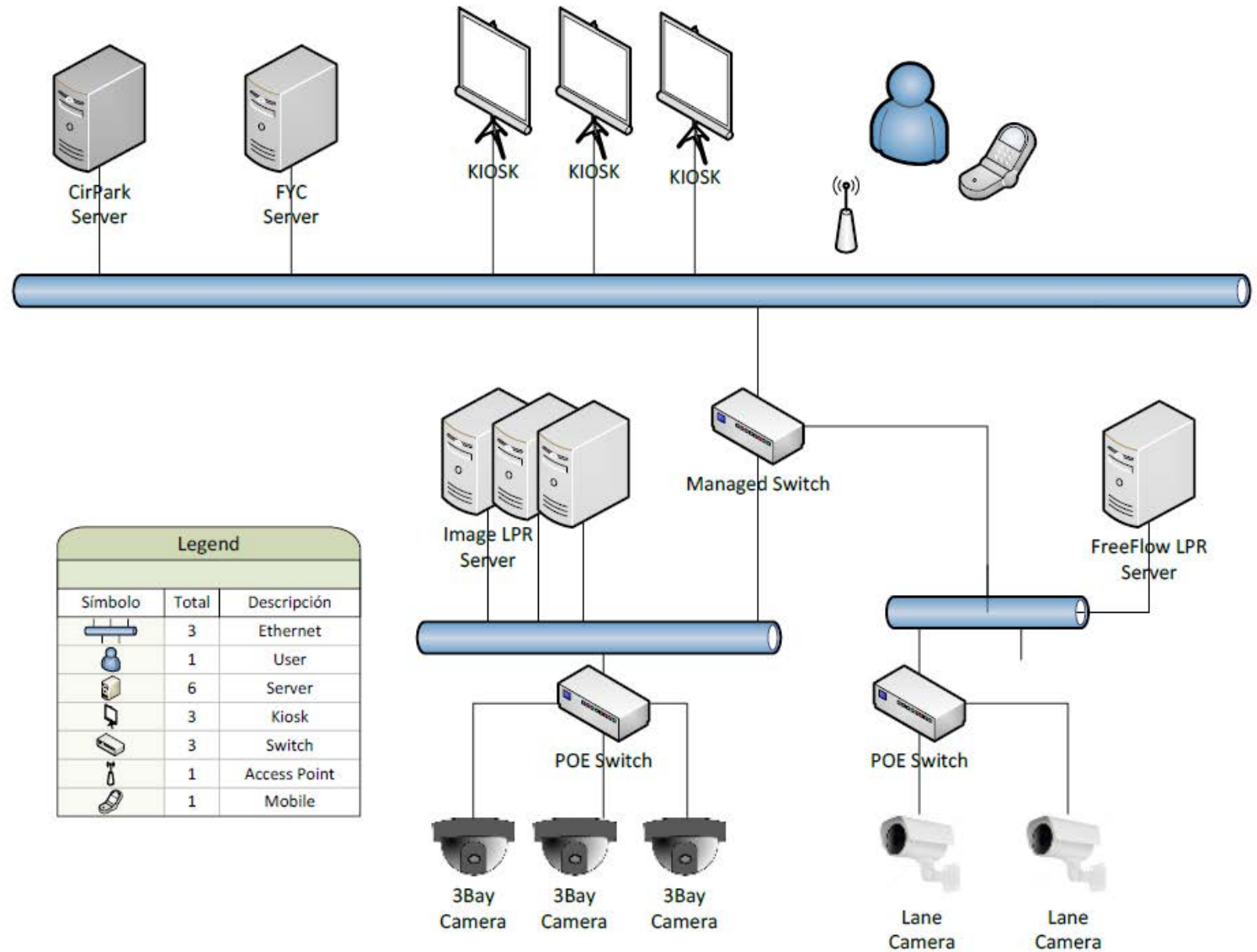
**Main Gigabit Ethernet Switch**  
INDOOR



**Server**  
INDOOR



**License**  
INDOOR





## Cameras

---

**FYC-3BAYCAM**  
460711



**Domo Camera** with autozoom 2.8-12mm and vandalproof for LPR each 3 parking spaces. 3MP resolution (H.264/H.265). IR cut filter with 30m range. External POE included. HD lens 1/2,9" SONY sensor CMOS low illumination. It works with FYC-MIDYELPR license.

**FYC-LANECAM V**  
460710V



**Bullet Camera** with autozoom 2.8-12mm and vandalproof for LPR by zone. 3MP resolution (H.264/H.265). IR cut filter with 60m range. External POE included. HD lens 1/2,9" SONY sensor CMOS low illumination. It works with FYC-FREEFLOW-1Z license.

## Terminal

---

**FYC-KIOSK**  
460722



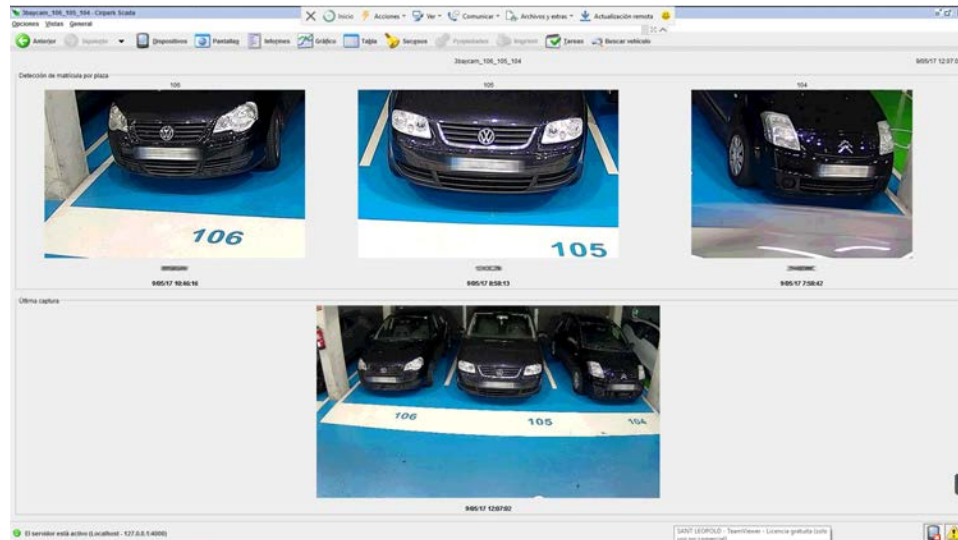
**FYC Kiosk**, User Interface for Find Your Car system made with galvanic iron. 22" panoramic touch screen. 220Vca/100W power and Ethernet output.

# Control

## SWITCHBOX POE 460720



**Ethernet Signal Concentrator** for a maximum group of 21 bays with 3BAYCAM LPR cameras. Includes an industrial POE switch for the group of cameras.



# Software

## FYC-SERVER Standard 460790-1 Deluxe 460790-2



**Server for FYC image processing** in static mode (FYC-LIC-IMAGELPR max 1000 bays) or used for as the platform for FYC software (FYC SOFTWARE). Includes License Plate Recognition Program. Minimum requirements: 4 cores equipment with i7 CPU or higher, 8GB RAM memory, 500GB HD and Windows 10 Pro. Specification of the FYC-SERVER will be according to the number of zones/levels in FreeFlow mode or the number of PK Spaces in Static Mode.

## FYC-FREEFLOW-1Z LICENSE 460750-1



**License Plate Recognition** for 1 detection zone.

## FYC-IMAGELPR LICENSE 460750-2



**License Plate Recognition** for parking space.



# LEDPark

Regulated Led Light system with LED technology, integrated with parking guidance and managed accordingly with real-time occupancy and pedestrian movements. Consumption reduction via Energy Efficiency management. Installation and Maintenance cost reduction thanks to its low power consumption and long-lasting equipment.



# Consumption reduction via Energy Efficiency management



## Led Park

Regulated Led Light equipment with low power consumption. Integrated into CirPark Platform for a full automatic and unattended control.

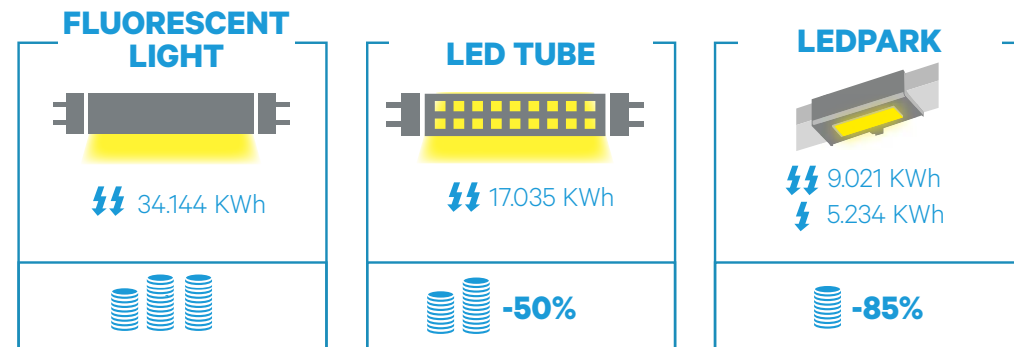


## Energy Efficiency

Consumption and Energy control with integrated management into CirPark Platform for eco-friendly LEED certification.

## Owner **Benefits**

Real parking data obtained by Oficial Laboratori



Less than 3 years of Return on Investment, giving high levels of illumination and reducing energy and maintenance costs.



## Lighting Modules

### BL-PARK-S 460651

**Led module**, regulated, of the led-park system. Maximum Consumption: 4W. Anchor bracket in iPark tray and built-in cooling plate. Connection via cable with connector.



### DL-PARK-2 460653

**Power Driver for Led Lighting Control**. Management Capacity 3 to 4 BL-PARK, with an output power of 3W per BL-PARK. 3 cable Input connection from Power supply 48Vdc and regulation from CL-PARK-2.



## Lighting Control

### TCP3RS 460803

**Industrial RS-485 to TCP-IP Ethernet communication converter**. RS-232/RS-485 opto-isolated port. Input power: 230 V AC. Consumption: 2 VA. DIN rail.



### CL-PARK-2 460802

**Header controller of the ledPark**. Power control over voltage regulation 0-10V. RS485 output for control from CIRPARK Software. One module per power supply and for control of up to 30 DL-PARK series drivers.



### PK-ENERGY KIT 460188

**Car park energy management kit**. Can be used to manage and control the energy consumption of the car park. Kit made up of one CVM-MINI grid analyser + one three-phase measurement transformer. For **new** electrical cabinets installation.



### PK-ENERGY KIT-2 460914

**Car park energy management kit**. Can be used to manage and control the energy consumption of the car park. Kit made up of one CVM-MINI grid analyser + one three-phase measurement transformer. For **existing** electrical cabinets, due to its easy placement thanks to the new teroidal clip.



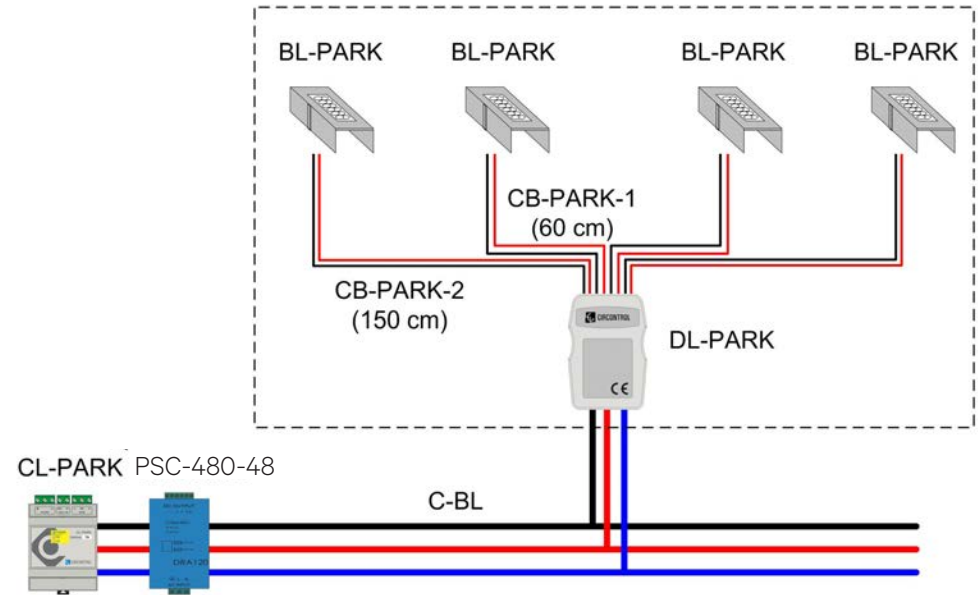
**PSC-480-48**  
460603

**Switched power supply.** Input power: 230 V AC.  
Output voltage: 48 V DC. Power: 480 W. DIN rail.



**KIT-PK-SAI-LED**  
460614

**Super Long Life UPS module** Ni-MH (nickel-metal hydride). Includes PSC-57 constant current source and switching relay. Rated output voltage: 43.2V. Constant current load. Capacity for 400W charging load, equivalent to 1 hour of uninterrupted illumination with the LedPark system. Extended Temperature Range. It allows communication with SCADA Software for battery status awareness.





## Lighting Accessories

**PK-CP245** Blind aluminium tray, 48 mm wide and 2.45 m long.  
460170



**PK-TSS** T-shaped galvanised-steel accessory to install the SP sensor series.  
460172



**PK-T** T-shaped galvanised-steel accessory without holes, to install the bilogy or trilogy in the ledPark system.  
460609



**PK-E** Galvanised-steel accessory for joining trays.  
460175



## Lighting Wiring

**CB-PARK** Wiring unit for connecting DL-PARK-2 to each BL-PARK-5 2 x 0.50 mm<sup>2</sup>, including halogen-free connectors and wiring.



**CB-PARK-60** 60 cm wiring unit.  
460605

**CB-PARK-80** 80 cm wiring unit.  
460605A

**CB-PARK-150** 150 cm wiring unit.  
460606

**CB-PARK-210** 210 cm wiring unit.  
460613A

**CB-PARK-500** 500 cm wiring unit.  
460613A

**CB-PARK-750** 750 cm wiring unit.  
460615

**C-BL** 100-m Halogen-free power and control-signal wiring for the DL-PARK systems installed: 2 x 6 mm<sup>2</sup> + 1 x 0.34 mm<sup>2</sup>

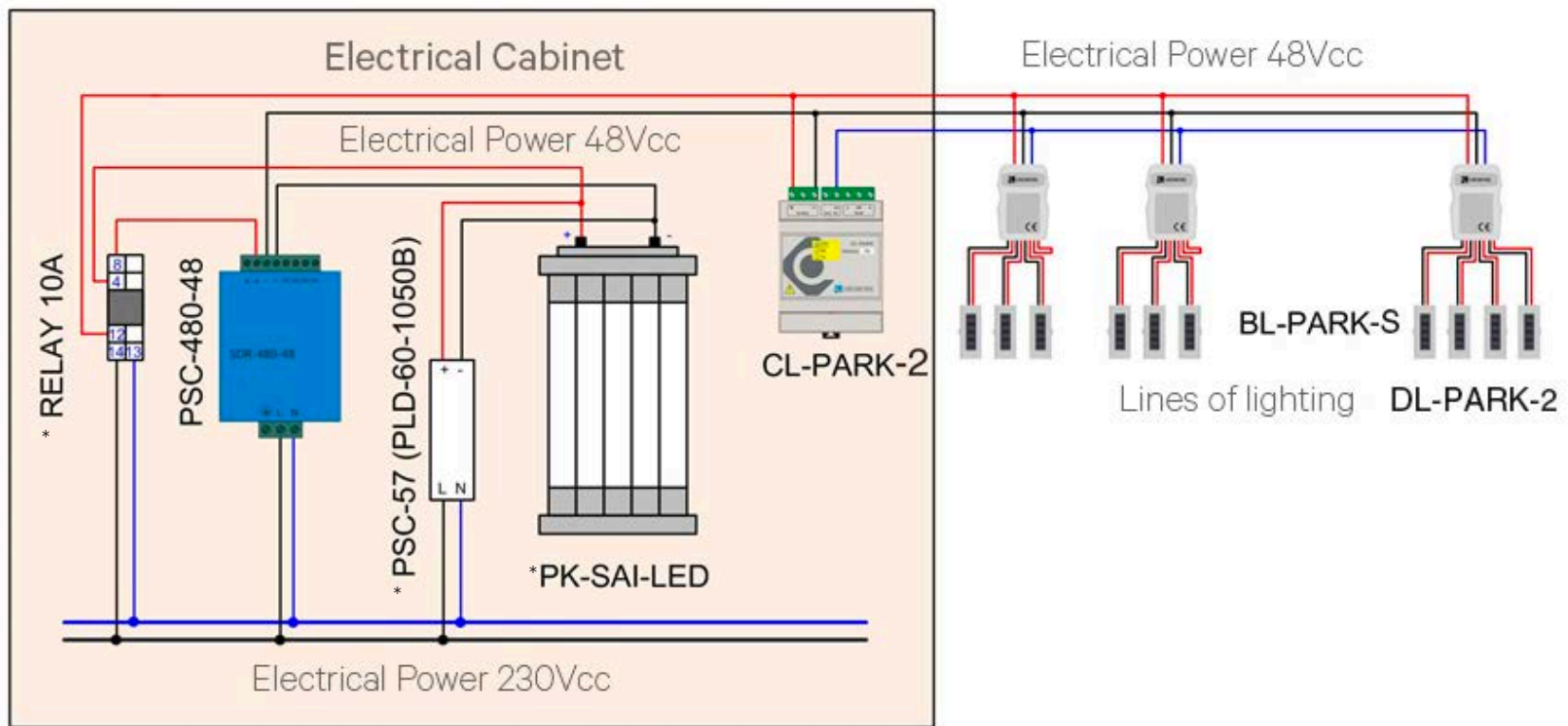


To be used from electrical cabinet until first driver.

**C-LH4** 100-m halogen-free hose-cable extending the row of devices. 2 x 1.5 mm<sup>2</sup> power cable + 2 x 0.34 mm<sup>2</sup> twisted and shielded cable for the RS-485 bus. To be used between drivers.



## Electric diagram ledParks System with the kit PK SAI LED



\* Included in KIT-PK-SAI-LED



# EVPark

EVPark is Circontrol's solution for Electric Vehicle (EV) charging in indoor and outdoor parking facilities.

# Charging in indoor and outdoor parking facilities



## Electrical vehicle chargers

EVPark offers a wide range of EV chargers; wall/ground mount, slow/quick charging, and single/double socket. For indoor/outdoor facilities.



## OCPP

To ensure a friendly operation of the chargers by the users and a profitable business model for the parking operator, EVPark solutions use OCPP (Open Charge Point Protocol), widely extended in the Electro-Mobility business.



## DLM

The Dynamic Load Management (DLM) system can be integrated with CirPark Platform, offering the most complete solution currently available on the market. DLM system ensures that only the available power of the installation is used, thus maximising its efficiency and avoiding the high cost of its power upgrading.



## Charge Point integrated with PMS

A complete procedured solution provided to Parking Management Systems manufacturers to integrate EV Charge Points into their own payment system.



## EV Charge Stations Indoor

Interface protocol: OCPP 1,2 1,5. Enclosure rating: IP54/IK10. Operating Temperature: -5 to +45°C. Display: Multi-language. RFID Reader: ISO/IEC14443 A/B, MIFARE classic/ DESFire EV1, NFC 16,56 MHz, ISO 18092/ECMA-340

### WallBox Evolve Smart S / T

WVS0006411 (S)  
WVS0006413 (T)



#### Indoor EV Charger with:

- Double Type2 socket
- Single phase (S) / Three phase (T)
- 32A max load in 2 x 7,2 KW output format (S)
- 32A max load in 2 x 22 KW output format (T)
- Mode 3 Charging

### WallBox Smart WBM-SMART-TRI

490089



#### Indoor EV Charger with:

- Type2 socket
- Three phase
- 32A max load 1 x 22 KW output format
- Mode 3 Charging

### WallBox Smart WB2M-SMART-TRI

WVS00064B3

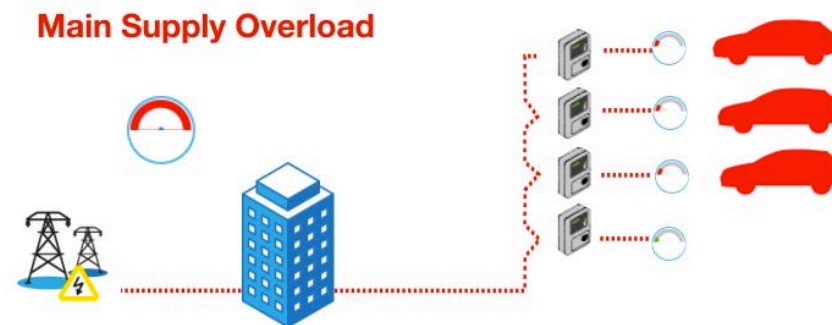


#### Indoor EV Charger with:

- Double Type2 sockets
- Three phase
- 32A max load 2 x 22 KW output format
- Mode 3 Charging

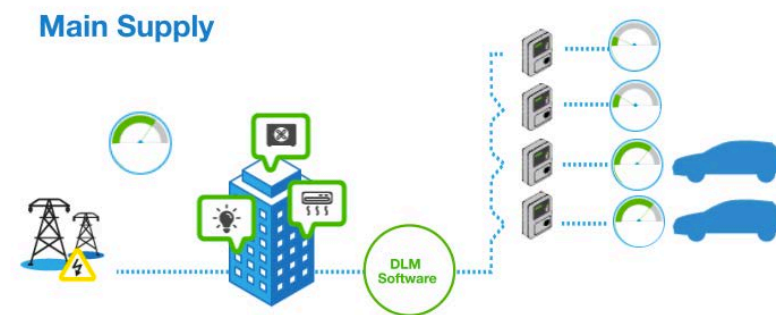
## DLM (Dynamic Load Management)

### Without DLM



### With DLM

### With dynamic load management





# EV Charge Stations Outdoor

Interface protocol: OCPP 1,2, 1,5. Enclosure rating: IP54/ IK10. Enclosure material: Aluminium & ABS. Enclosure door lock. Operating temperature: -5 to + 45 °C. Dimensions: 450mmx290mmx1550mm. RFID Reader: ISO/IEC14443A/B, MIFARE classic/DESFire EV1, NFC 16,56MHz, ISO 18092/ECMA-340

## Post eVolve smart T

PVS0006411

### Outdoor Charge Point for Electrical Vehicles with:

- Three phase connection.
- 2 x (32A Type2) socket.

## Post eVolve smart S

PVS0006413

### Outdoor Charge Point for Electrical Vehicles with:

- Single phase connection.
- 2 x (32A Type2) socket.

## Post eVolve smart TM4

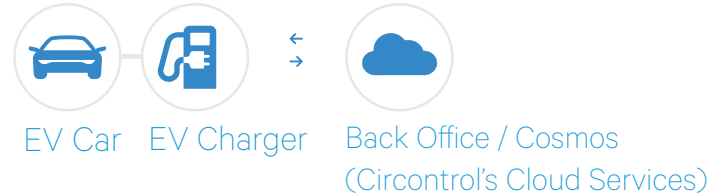
PVS00064B3

### Outdoor Charge Point for Electrical Vehicles with:

- Three phase connection.
- 2 x (32A Type2) and 2 x (16A CEE/7) sockets.



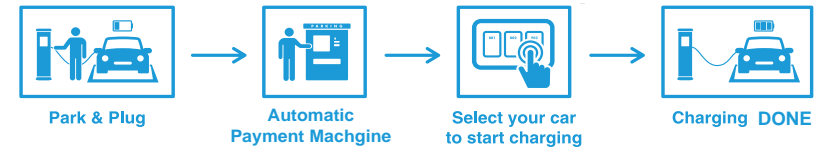
# OCPP Integration



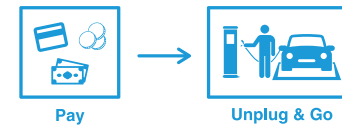
# Charge Point Integration

## Rotation Users

Arrival

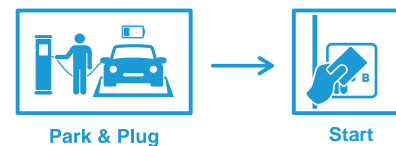


Departure

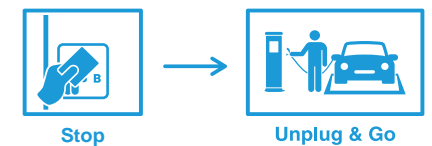


## Subscribed Users

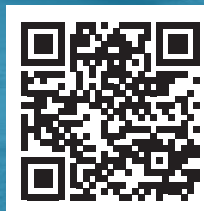
Arrival



Departure



# “ Solutions for Efficient Parking



Circontrol has a network of distributors and representative agents all over the world. For further information please contact:

**Headquarter Address:**

C/ Innovació, 3 Industrial Park Can Mitjans  
08232 Viladecavalls (Barcelona), Spain

**Phone:** (+34) 937 362 940

**Fax:** (+34) 937 362 941

**Mail:** [circontrol@circontrol.com](mailto:circontrol@circontrol.com)

V19



[circontrol.com](http://circontrol.com)